

La Virgen del Socorro

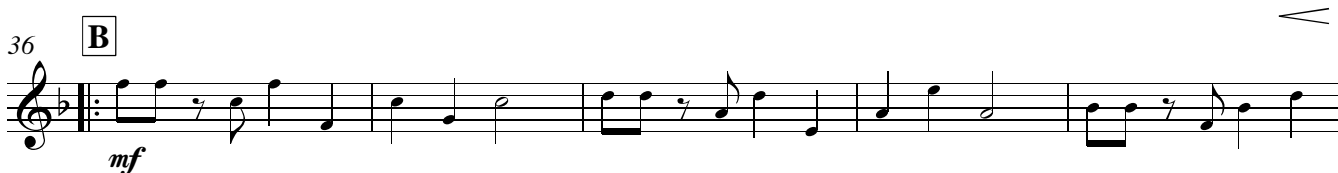
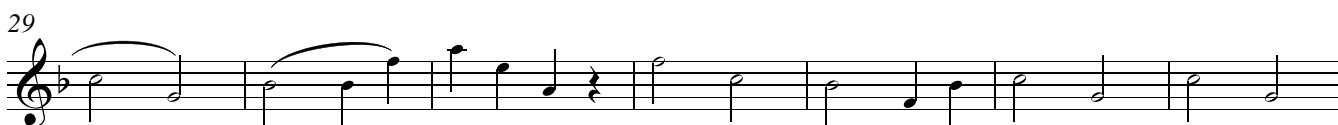
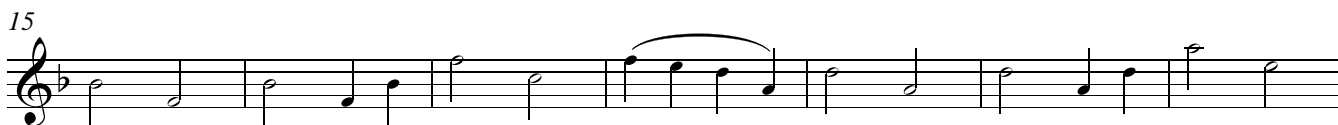
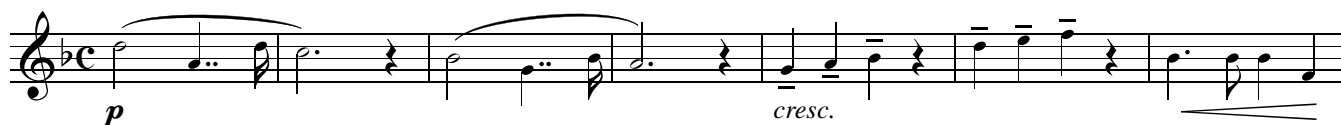
Clarinete Bajo

"Patrona de la Ciudad de Tijola"

Dedicada a la Patrona de la Ciudad de Tijola, para que nunca falte en su Procesionar cada 15 de Septiembre en su Día Grande.
Por encargo de mi gran amigo, padre de mi alumno y Ex-Alcalde de dicha localidad
D. José Francisco Carreño Berrueto

Juan Carlos Cañada Gómez

Allegretto ♩ = 100



V.S.

57 **E**

mf

Measures 57-62: A melodic line in 3/4 time. Measure 57 has a whole rest. Measures 58-60 feature eighth-note patterns with slurs and accents. Measure 61 has a dotted eighth note followed by a sixteenth note. Measure 62 ends with a quarter rest.

63 **F** Sotto Voce

p

Measures 63-70: A series of eighth notes with slurs, marked *p*. Measure 63 starts with a double bar line and a '2' above it, indicating a second ending.

71

Measures 71-76: A series of eighth notes with slurs.

77

Measures 77-80: A series of eighth notes with slurs, ending with a double bar line.

Solo

G Tempo di Sardana **H**

81 **12**

Measures 81-97: A series of eighth notes with slurs, marked *Tempo di Sardana*. Measure 81 starts with a double bar line and a '12' above it, indicating a 12-measure section.

98

Measures 98-101: A series of eighth notes with slurs.

102

ff

Measures 102-106: A series of eighth notes with slurs, marked *ff*. Measure 102 starts with a double bar line. Above measures 102-103 are first and second endings: '1.' and '2.'.